

Owner's Manual

ENGLISH

Accessory

Croozer Cargo Handcart Kit



CROOZER®

IMPRINT

Published by: Croozer GmbH
Oskar-Jäger-Str. 125
D-50825 Cologne
Germany

Copyright © 2019 Croozer GmbH. All rights reserved.
No part of this manual may be reproduced or transmitted in any form for any purpose other than the purchaser's personal use.

Additional manuals and instructions on the use of this product can be ordered from Croozer GmbH or downloaded from the website www.croozer.com.
Every effort has been made to ensure the accuracy of this manual. However, if you do find an error, we would appreciate hearing about it so that we can correct it.

Planning, text, graphic design and editing:
W. Piontek, www.technik-transparent.de

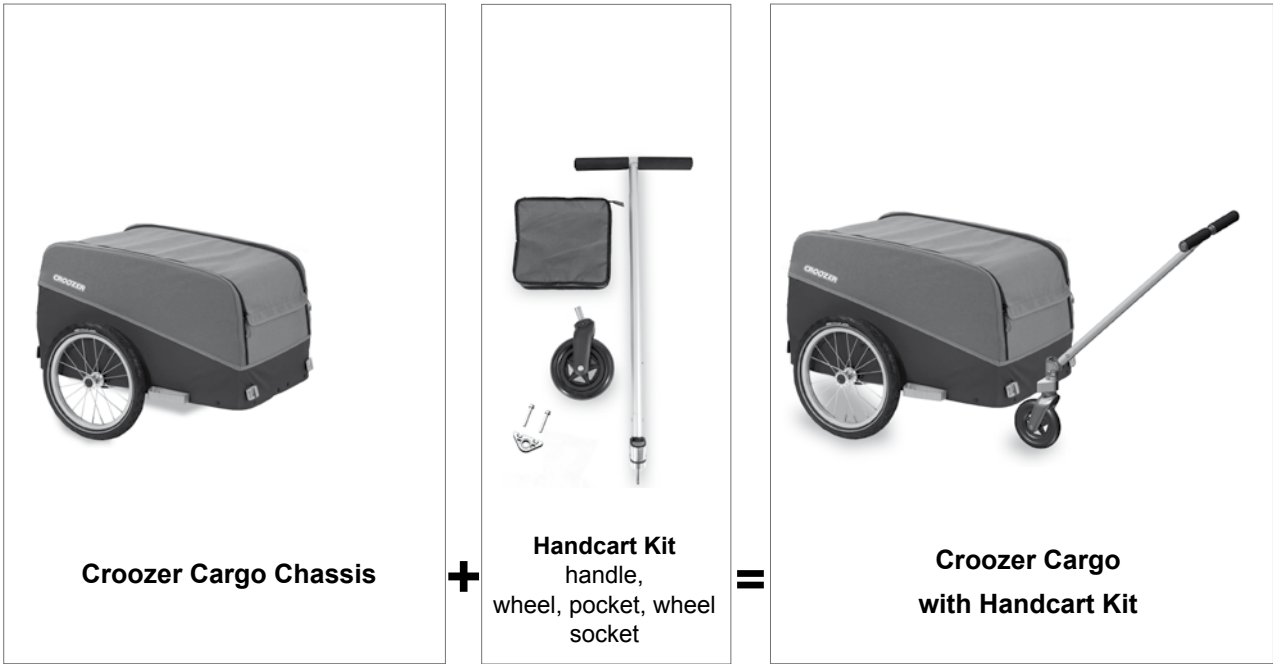
Photos: W. Piontek and Croozer GmbH

Table of Contents

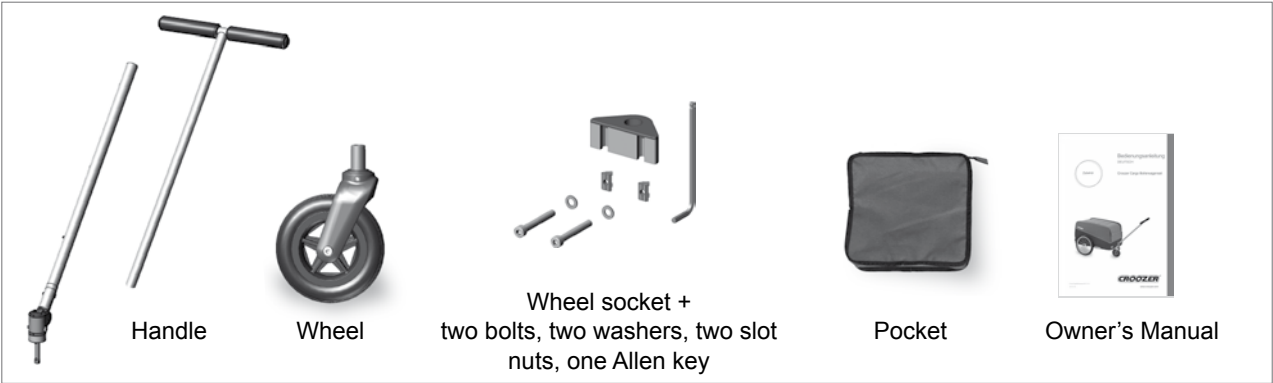
Description	4
Delivery contents	4
Fastening Systems	4
How should the Handcart Kit be used?	5
How shouldn't the Handcart Kit be used?	5
Orientation and wording	5
Applicable standards	5
Safety Guidelines	6
Symbols and warnings	6
Read and observe the manual of the Cargo Trailer!	6
The Croozer Cargo as a Handcart	6
Assembly, maintenance and repair	6
Converting the Croozer Cargo to a Handcart.	7
Mounting the Handcart wheel socket	7
Attaching and removing the Handcart wheel, handle and pocket	8
Special considerations when using the Handcart	10
Tips for using the Handcart	10
Cleaning, Storage and Disposal	11
Warranty	11
Submitting a claim	11

Description

Description



Delivery contents



Fastening Systems

Click & Crooz® fastening system
for handle and wheel
Simply press button and insert, automatic locking, press button for removal



How should the Handcart Kit be used?

The Handcart Kit is for mounting to Croozer Cargo trailers, model year 2019 and newer.

How shouldn't the Handcart Kit be used?

The Handcart Kit may not be mounted to model year 2018 or older Croozer Cargo trailers or to bicycle trailers from other manufacturers, because these products do not have the required mounting site.

Croozer GmbH will not be liable for any damages resulting from non-compliance with these requirements.

Orientation and wording

Unless otherwise indicated, the terms right and left in this manual are relative to the direction of travel.

Applicable standards

The following standards were taken into consideration:
EN 15918:2011 + A2:2017

Safety Guidelines

Symbols and warnings



DANGER!

DANGER indicates a hazardous situation which, if not avoided, will result in death or serious injury.



WARNING!

WARNING indicates a hazardous situation which, if not avoided, could result in death or serious injury.



CAUTION!

CAUTION indicates a hazardous situation which, if not avoided, could result in minor or moderate injury.

NOTICE

NOTICE indicates a situation which, if not avoided, could result in damage to the Croozer Cargo or the environment.

Tip: *In this manual, "Tip" indicates helpful advice about the use or maintenance of the Croozer Cargo Handcart Kit.*

Read and observe the manual of the Cargo Trailer!

This manual contains information that is extremely important for your safety and that of other road users. Therefore, it is essential that you read the entire manual carefully and follow the instructions closely. If you should experience difficulties understanding any of the information or instructions, please contact your Croozer dealer. Keep this manual handy at all times for future reference. It is also vitally important that you read and observe the instructions provided in the manual of the Cargo Trailer, which includes other important information on the use of the Croozer Cargo with the Handcart Kit.

The Croozer Cargo as a Handcart

The Croozer Cargo with the Handcart Kit is not approved for jogging or skating. Pulling the Handcart faster than a walking pace is not permitted.

Carrying cargo

Be sure to properly secure all cargo in the Handcart to prevent it from sliding or shifting, which could impair your safety when pulling the Handcart. Never transport objects that are too large to fit completely into the cargo area of the Handcart. Never attach cargo, such as bags or panniers, to the outside of the Handcart. Cargo attached to the outside of the Handcart can drastically affect its handling and stability, potentially resulting in accidents with serious injury or death. You can carry smaller objects in the pocket inside the Handcart.

Assembly, maintenance and repair

Proper installation and repair

It is vitally important that the Handcart Kit be properly installed. Be sure to follow the assembly instructions in this manual. When in doubt, contact your Croozer dealer. All repairs must be carried out to professional standards using only original Croozer parts, ideally by a professional bicycle mechanic. Incorrect installation or repair work could result in accidents with serious injury or death.

Suitable accessories and original spare parts

Only use original spare parts and accessories that have been approved by Croozer GmbH. These are the only components that can be used safely with the Croozer Cargo. When in doubt, consult a Croozer dealer. The use of non-approved accessories or incompatible spare parts could result in accidents with serious injury or death. Croozer GmbH will not be liable for any damage resulting from the use of non-approved accessories or incompatible spare parts.

Technical condition

Never use the Croozer Cargo Handcart if it is not in perfect working order. The Croozer Cargo Handcart must be periodically inspected for damage and/or wear to the wheels, frame, fabric body and security pins. If any of these parts are found to be damaged, the Croozer Cargo Handcart may not be used until the damage has been properly repaired, ideally by a professional bicycle mechanic. Using the Croozer Cargo when it is not in perfect working order can result in accidents with serious injury or death.

Converting the Croozer Cargo to a Handcart

Before attaching the Handcart wheel and handle, the wheel socket must first be mounted to the frame. You will need a flat-head screwdriver and the 6mm Allen key that came with the Handcart Kit. If you happen to have a torque wrench, then use this tool with a 6mm hex bit instead of the Allen key.

Mounting the Handcart wheel socket

1. Remove the hitch arm.
2. Tip the Croozer Cargo onto its back until it is resting on the rear panel.

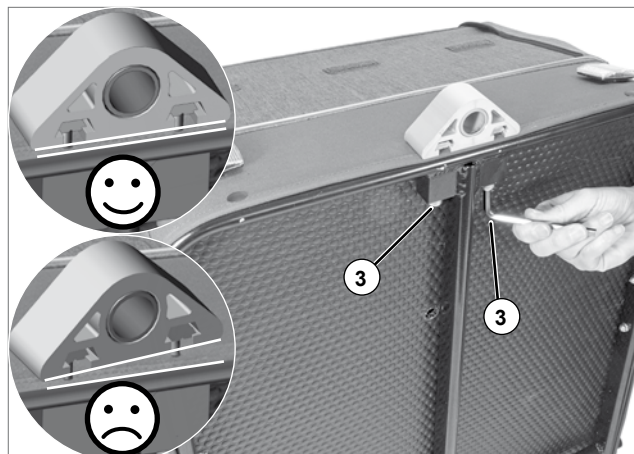
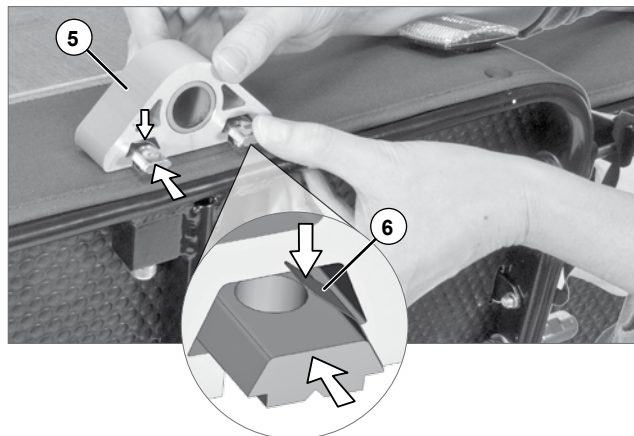
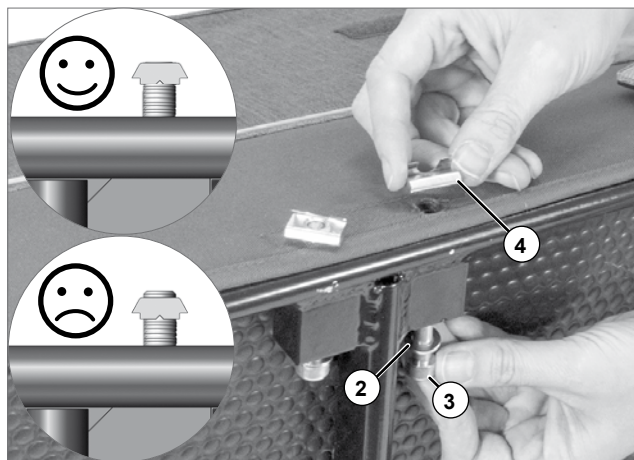
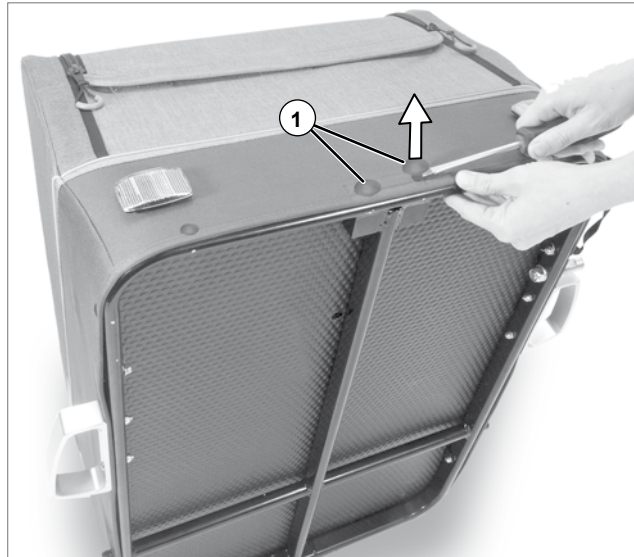
Tip: Make sure that your working surface is clean and smooth to avoid soiling and/or damaging the fabric body.

3. Use the flat-head screwdriver to remove the two hole plugs (1) on the front of the Croozer Cargo.
4. Place a washer (2) onto an Allen bolt (3) and insert the bolt through one of the two holes in the frame of the Croozer Cargo from back to front. Then screw a slot nut (4) onto the end of the bolt protruding through the front of the frame tube. Make sure that the end of the bolt is flush with the slot nut (4).
5. Repeat step 4 with the second bolt, washer and slot nut.

Tip: Make sure that the ends of the bolts do not protrude beyond the faces of the slot nuts. Otherwise, it will not be possible to slide the wheel socket onto the slot nuts.

6. Position the wheel socket (5) over the slot nuts (4). Then, while pressing down the springs (6) of the slot nuts, slide the wheel socket (5) onto the slot nuts until they are completely inside the wheel socket.

7. Position the wheel socket so that the top edge is perfectly aligned with the edge of the frame and fabric.
8. Then tighten the two Allen bolts (3) either as far as they will go using a 6mm Allen key or with a torque of 6-8 Nm using a torque wrench.



Converting the Croozer Cargo to a Handcart

Attaching and removing the Handcart wheel, handle and pocket

Attaching the Handcart wheel

1. Place the Croozer Cargo on its wheels with the front slightly raised.
2. Insert the Handcart wheel (1) into the wheel socket (2) with the wheel swivelled to the rear.

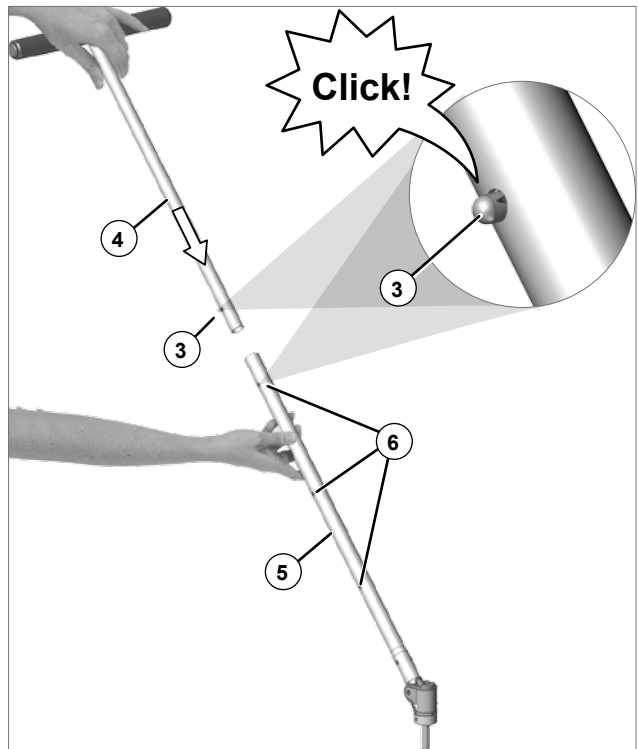


Attaching the handle

3. Press the pin (3) on the top part of the handle (4) while inserting the top part of the handle into the bottom part of the handle (5) until the pin (3) has visibly and audibly snapped into one of the three holes (6).

Tip: You can adjust the length of the handle to your height by selecting the most appropriate hole (6) in the handle.

4. Check whether the pin is properly engaged in the respective hole by pulling on the two ends of the handle.



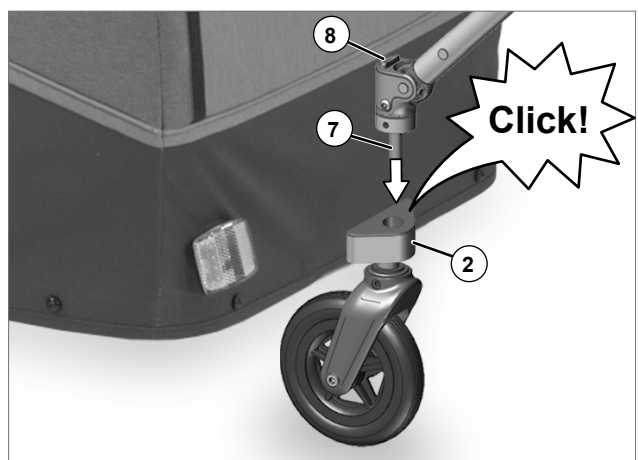
CAUTION!

Always check that the pin is properly engaged so that the two parts of the handle are locked together. If the two parts of the handle are not locked together securely, they could come apart while in use, resulting in accidents with injuries.

5. While pressing the grey button (8) of the Click & Crooz® fastening system, insert the pin at the end of the handle (7) into the wheel socket (2) as far as it will go. You should hear a click and be able to see that the handle is securely locked into the wheel. You may have to rotate the mechanism slightly while inserting the pin of the handle in order to find the right position for locking the pin in place.
6. Check whether the handle and wheel are securely locked by pulling the handle upwards.

CAUTION!

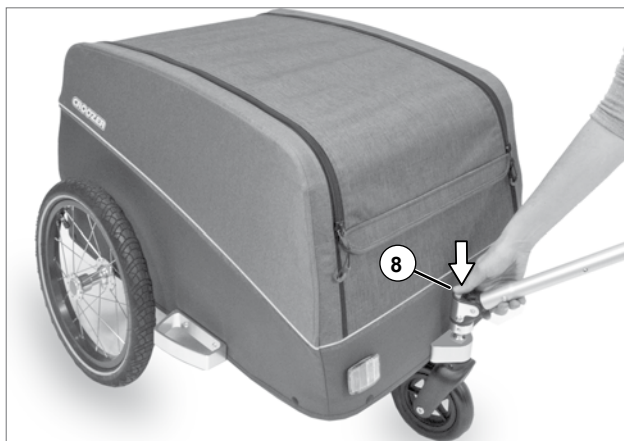
Always check that the Handcart wheel and handle are securely locked into the socket and cannot be pulled out without pressing the button. If the Handcart wheel and handle are not locked securely into the wheel socket, the wheel could fall off while in use, resulting in accidents with injuries.



7. To remove the Handcart wheel and handle, press the button (8) and pull the handle upwards and the wheel downwards and out of the wheel socket.

**CAUTION!**

Never leave the Handcart wheel and handle attached when using the Croozer Cargo as a Cargo Trailer. The Handcart wheel or handle could get caught on obstacles as you pass, resulting in accidents with injuries.

**Mounting the pocket**

8. Wrap the top flap (9) of the pocket around the front frame tube (10) and secure it by connecting the Velcro strips.
9. There are two other Velcro strips (11 and 12) inside the front panel of the Croozer Cargo and on the back of the pocket. Press these two strips (11 and 12) together (13) in order to prevent the pocket from swinging freely while pulling the Croozer Cargo.



Converting the Croozer Cargo to a Handcart

Special considerations when using the Handcart

Speed

The Handcart can be pushed or pulled at a walking pace. Faster speeds are not permitted. If the Handcart is used when jogging, rollerblading or roller-skating, sudden changes in weight distribution could cause the Handcart to move unpredictably. For this reason, the Handcart cannot be used when rollerblading, roller-skating or jogging.



WARNING!

The Handcart is not approved for rollerblading, roller-skating or jogging. Jogging, roller-skating or rollerblading with the Handcart can result in accidents with serious injury or death.

Load capacity and weight distribution

The Handcart has the same load capacity as the Cargo Trailer.

Be sure to distribute the weight so that the centre of gravity is in the middle of the cargo area and not too far to the back. Otherwise, the Handcart could tip backwards when pulling it over a kerb. An even weight distribution also makes the Handcart easier to manoeuvre and prevents excessive wear on the materials.

NOTICE

Never carry more than the maximum allowable weight, as this could damage the Croozer Cargo. Always distribute the load evenly. If you carry too much weight at the rear of the cargo compartment, the Handcart could tip backwards, which could damage the Croozer Cargo.

Parking the Handcart

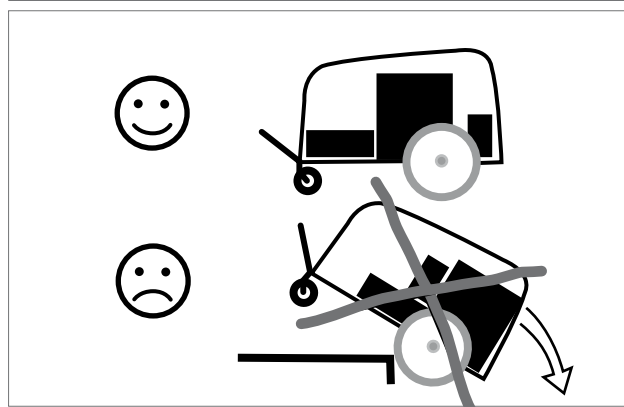
Only park the Croozer Cargo on flat surfaces, and always secure it from rolling.

Tips for using the Handcart

- Never manoeuvre the Handcart over stairs or other obstacles, as this could damage the Croozer Cargo.
- Lift the Handcart when pulling it over kerbs or other obstacles. Never pull the Handcart wheel against a kerb, as this could damage the wheel.
- When pulling the Handcart, never release the handle. Otherwise, the Handcart could roll away.

Maximum Load (Cargo)

40 kg (88 lb)



Cleaning, Storage and Disposal

See Croozer Cargo owner's manual for information on the cleaning, storage and disposal of the Handcart.

Warranty

The statutory warranty for material defects applies. The warranty for material defects does not cover damage caused by improper handling/use, use of excessive force, inadequate maintenance or normal wear.

The length of the warranty period is dependent on the respective country of purchase.

Submitting a claim

If you notice any issues with your Handcart Kit, contact a Croozer dealer. The dealer will forward your claim to us. In order to process your claim, we – and/or your dealer – will need the original sales receipt.

CONTACT

Croozer GmbH
Oskar-Jäger-Straße 125
D-50825 Cologne
Germany
info@croozer.com
www.croozer.com



www.croozer.com